

October 9, 1987

Dear Planning Commission Member,

Enclosed please find the results of the survey that was sent out to all Peninsula residents in August, 1987.

Please review the survey before this upcoming Planning Commission Meeting on October 19, 1987, since a member from Protect the Peninsula will discuss it with the board at that meeting. It has been placed on the agenda.

We are hopeful that the survey and the following dialogue will be helpful to the Township officials in their efforts in planning the future direction of Peninsula Township.

Sincerely,

Protect the Peninsula Committee

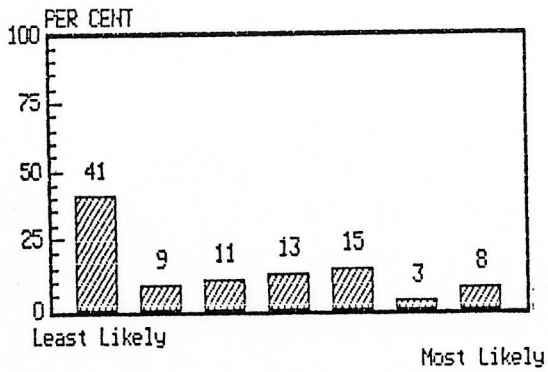
Enclosure

cc: Gary Harsch
Bill Wise

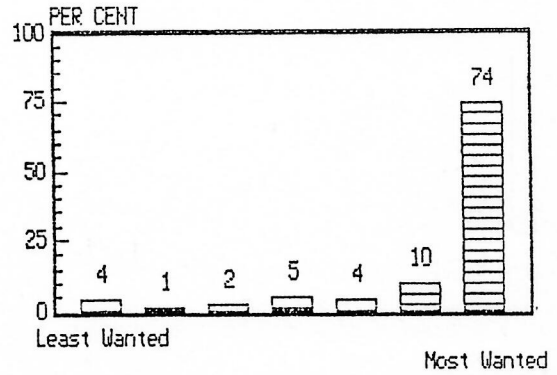
How do you see the Peninsula in 15-20 years if changes continue as they have in the past?

How would you like to see the Peninsula in 15-20 years?

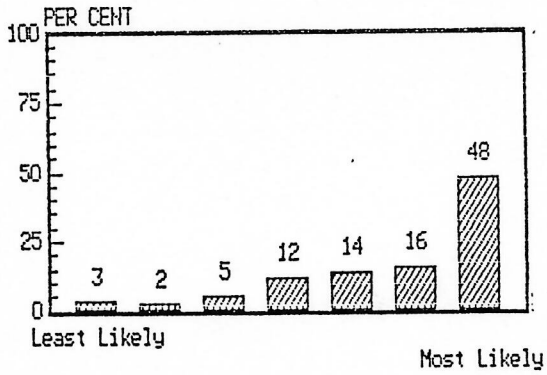
SIMILAR TO WHAT IT IS NOW



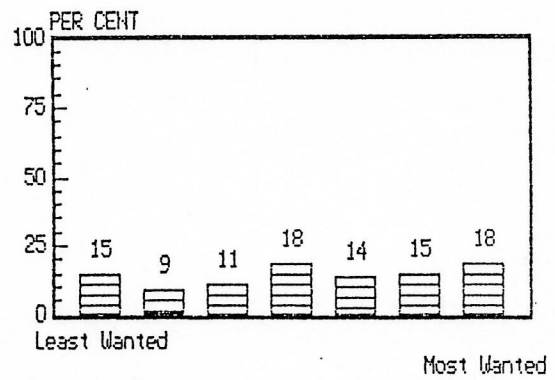
SIMILAR TO WHAT IT IS NOW



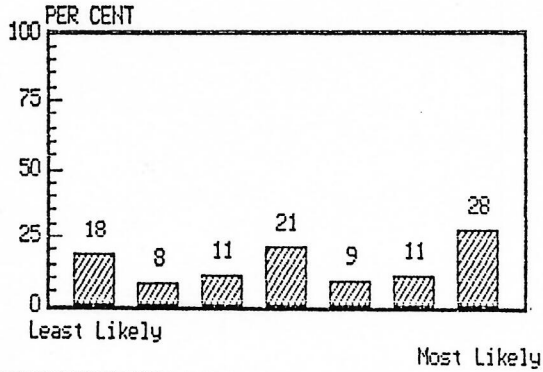
MORE INDIVIDUAL HOMES



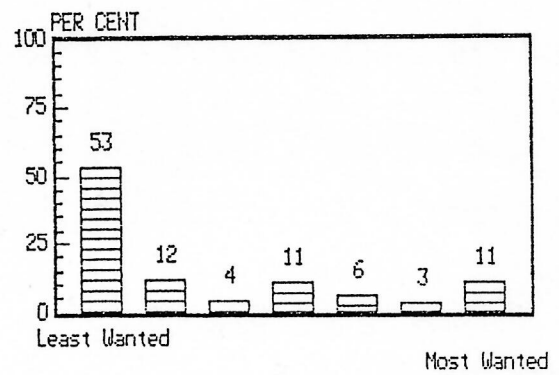
MORE INDIVIDUAL HOMES



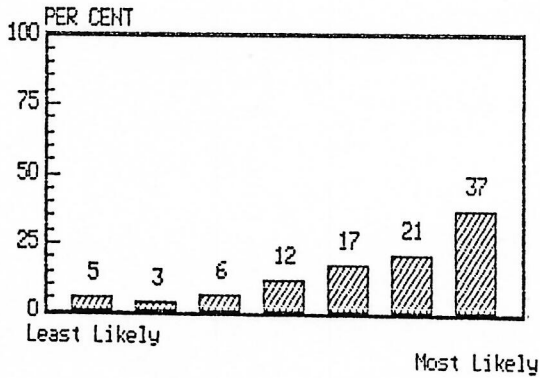
SOUTH END IN CITY LIMITS



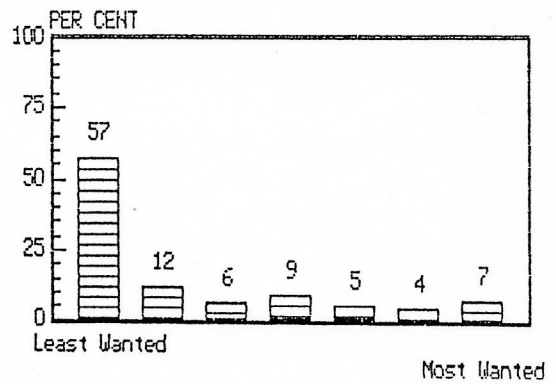
SOUTH END IN THE CITY LIMITS



FEWER FARMS, MORE PUD's

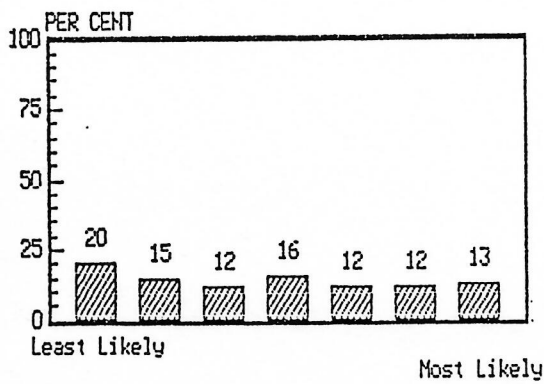


FEWER FARMS, MORE PUD's



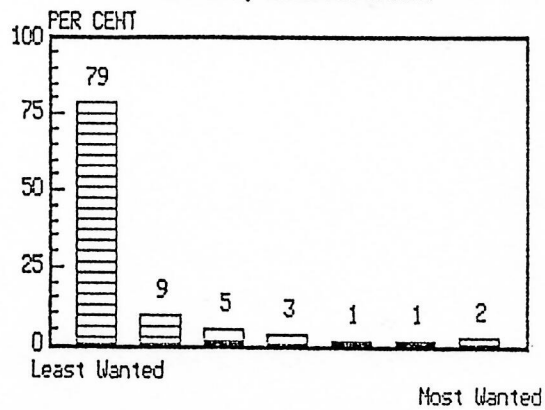
How do you see the Peninsula in 15-20 years if changes continue as they have in the past?

FEW FARMS, MORE COMMERCIAL

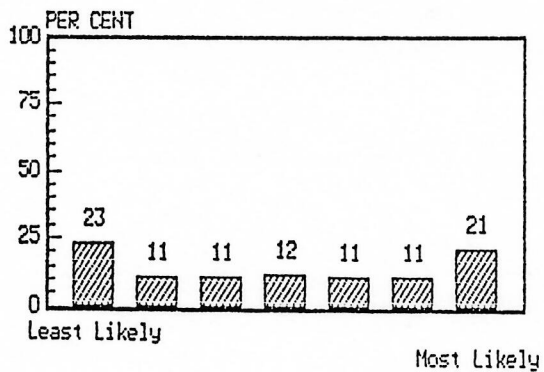


How would you like to see the Peninsula in 15-20 years?

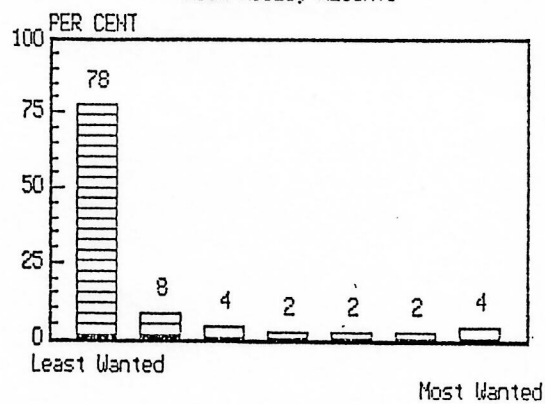
FEW FARMS, MORE COMMERCIAL



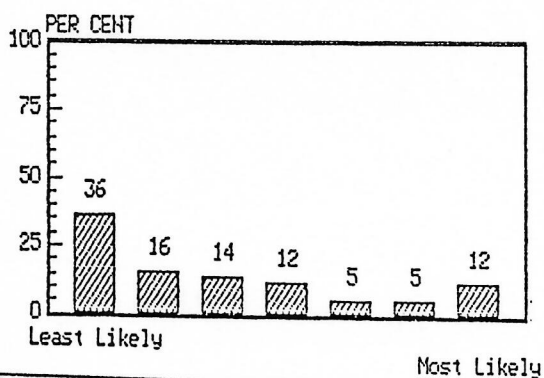
HIGH RISES, RESORTS



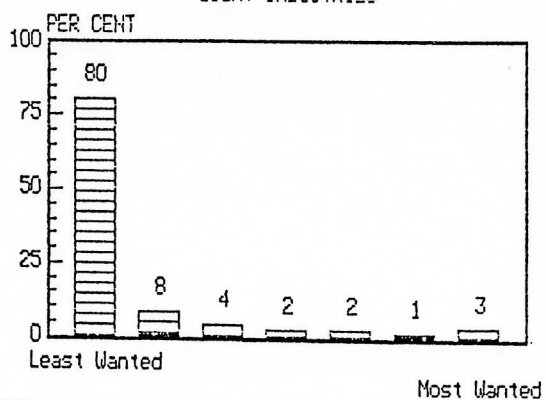
HIGH RISES, RESORTS



OFFICES, LIGHT INDUSTRIES

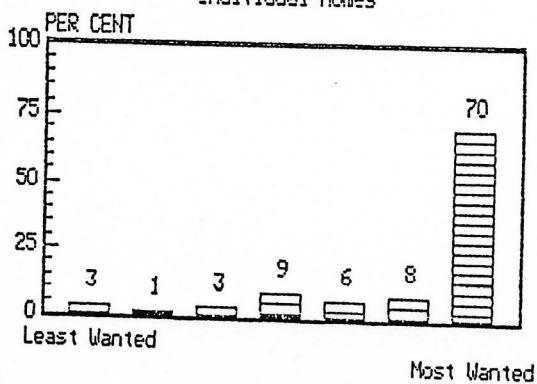


LIGHT INDUSTRIES

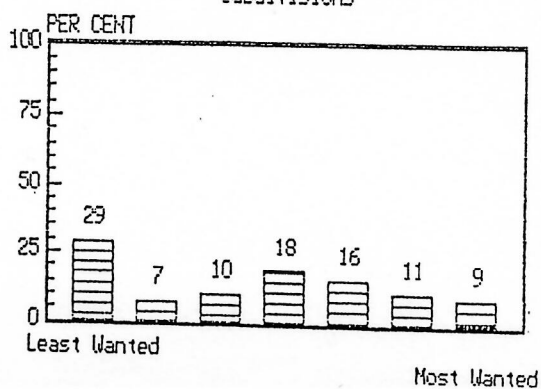


What type of development do you feel is desirable?

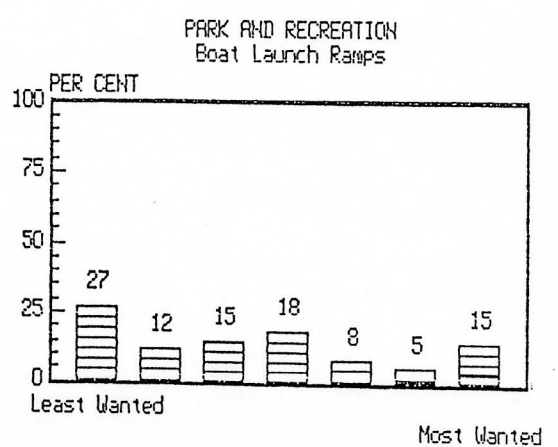
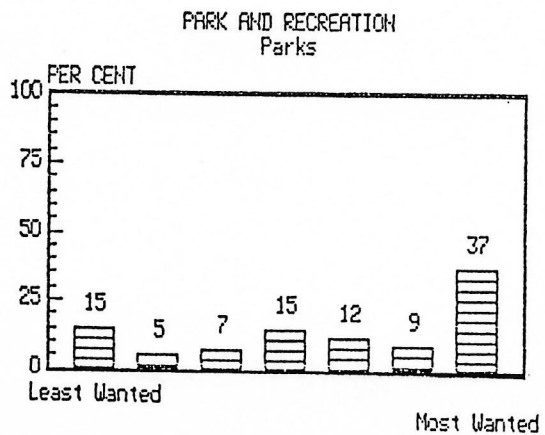
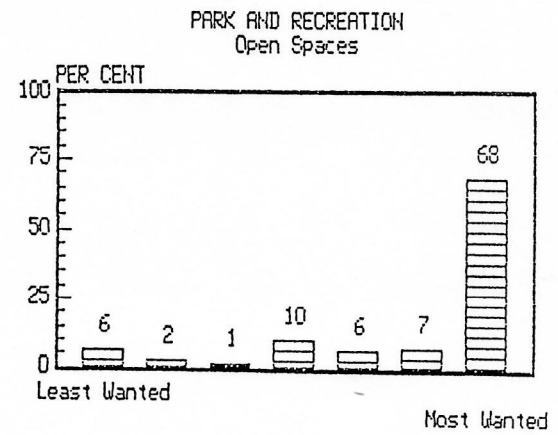
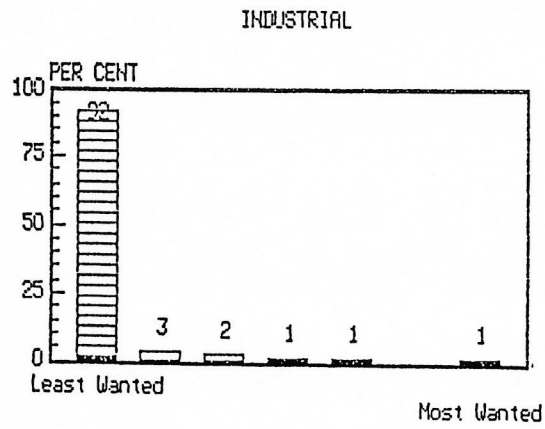
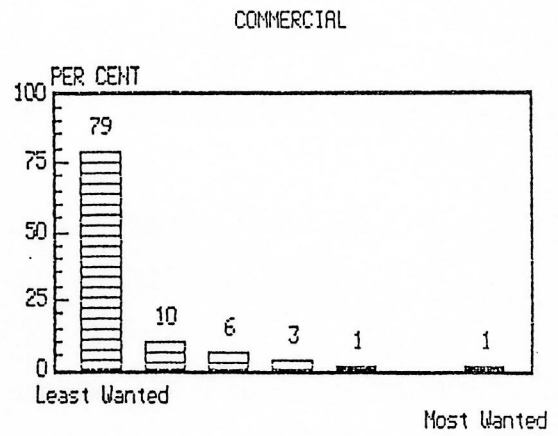
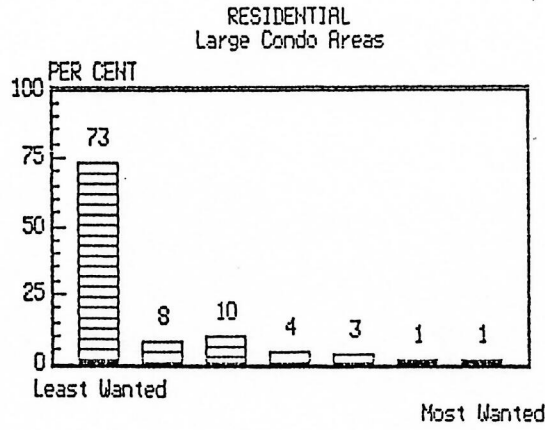
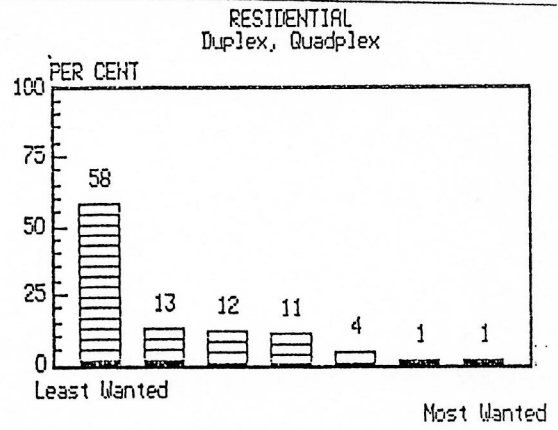
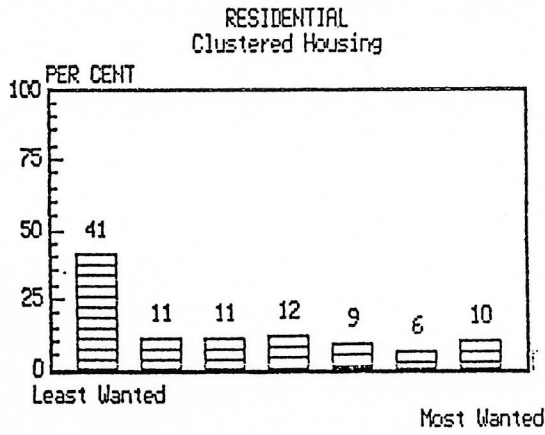
RESIDENTIAL Individual Homes



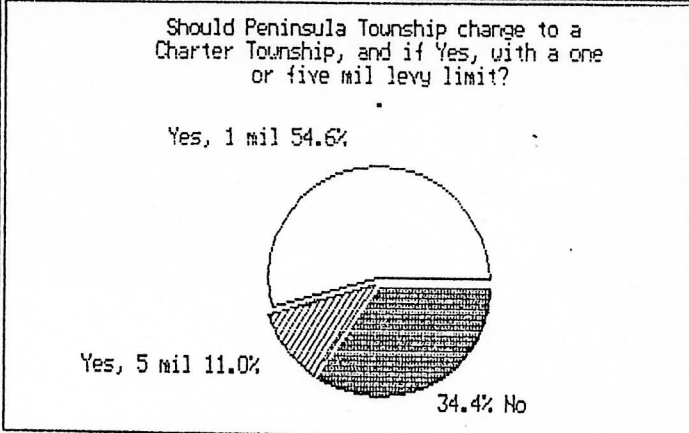
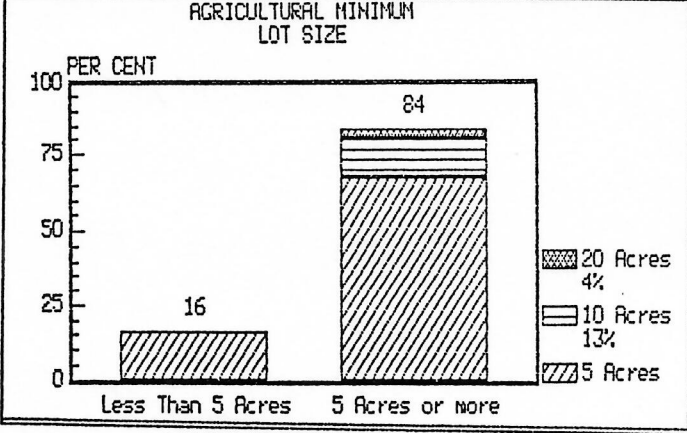
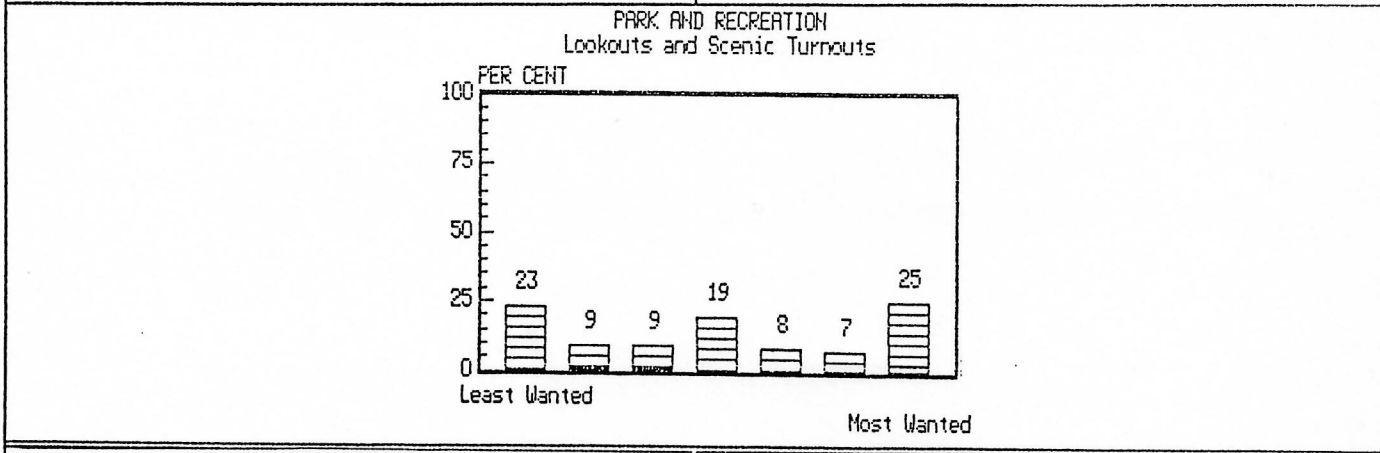
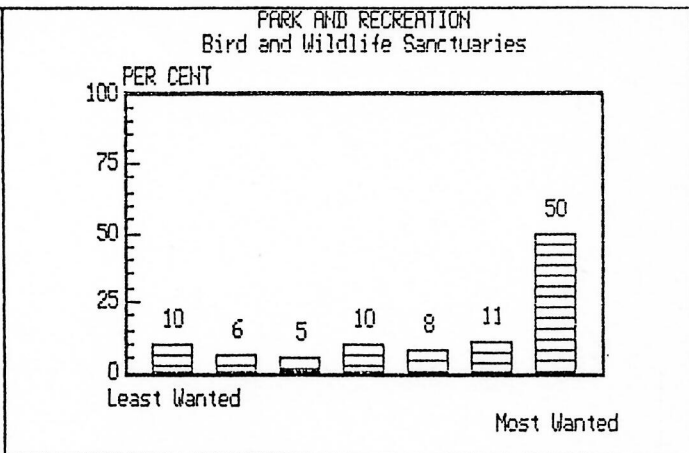
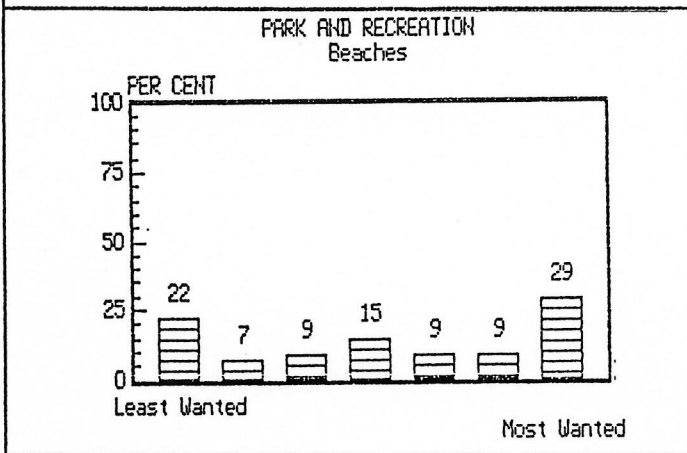
RESIDENTIAL Subdivisions



What type of development do you feel is desirable?



What type of development do you feel is desirable?



AGRICULTURAL LAND USE - 98% felt farms should remain farms if possible
 However, if they couldn't remain farms:
 69% said they should be allowed to change to Residential,
 11% said they should be allowed to change to Commercial,
 5% said they should be allowed to change to Industrial.

The respondents are opposed to the relocation of Center Road by 3 to 1.

The respondents represented 996 persons, of which 599 are voters of Peninsula Township. 85% of the surveys were filled out by full-time residents, and 99% of the respondents are Peninsula property owners.

Over 21% of the 1700 surveys mailed were completed and returned, which indicates a very high interest in these issues.